

KUBO5T-W

5.25" Compact design two-way loudspeaker, white



The stylish and subtle cube-shaped designed KUBO5T is a 5.25" two-way compact loudspeaker with bass reflex port. It can be used as a 70/100 volt or low impedance 16 ohms loudspeaker producing up to 80 watts dynamic power. The K-Mount bracket offers easy cable management and 140° vertical or horizontal mounting flexibility. Combined with the special designed fixing K-bolts you can install the loudspeaker in a safe and comfortable way on any type of wall or ceiling.

Easy daisy chaining of multiple KUBO loudspeakers can be done via the in & link connection with euroblock connectors. The installer friendly end-caps, held in place by 14 integrated strong neodymium magnets, hide all connections and bracket hardware on both sides. This top-notch product offers amazing sound quality and performance in a discrete and neutral housing fitting any kind of interior.

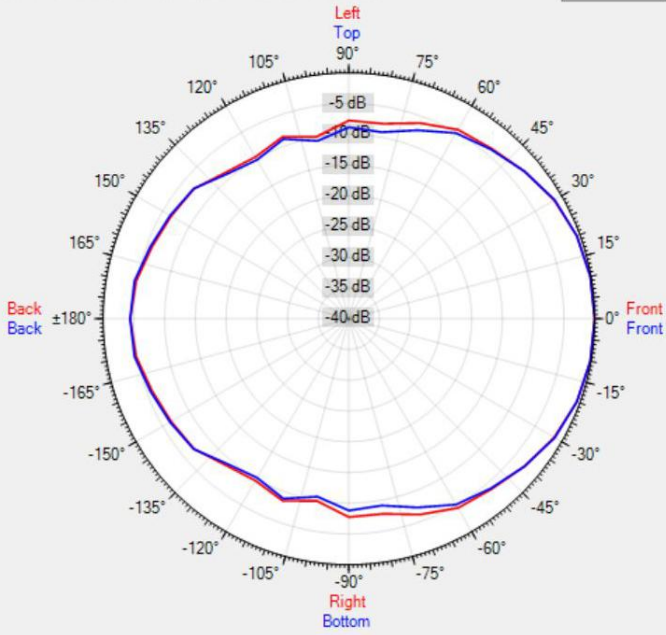
TECHNICAL SPECIFICATIONS

| | | | |
|--|----------------------------|--------------------------------------|-----------------|
| height in mm | 155 | width in mm | 164 |
| depth in mm | 136 | loudspeaker system | 2-way |
| woofer size in inch | 5.25 | woofer cone material | coated paper |
| tweeter size in inch | 1 | mounting system | U-bracket |
| colour | black / white | 100V transformer power taps in watts | 30 - 15 - 6 - 3 |
| 70V transformer power taps in watts | 30 - 15 - 7.5 - 3 - 1.5 | impedance (ohms) | 16 |
| low impedance dynamic power in watts | 80 | low impedance RMS power in watts | 50 |
| SPL 1W/1m in dB | 92 | max SPL 1m in dB | 106 |
| frequency response in Hz | 94 - 20K | main construction material | ABS plastic |
| grille main material | steel | IP rating | 40 |
| Horizontal dispersion angle 1000 Hz | 180° | Vertical dispersion angle 1000 Hz | 180° |
| closest RAL colour (subject to deviations) | RAL9016 (W) / RAL9011 (BL) | Net weight product (kg) | 2.05 |

POLAR PLOTS

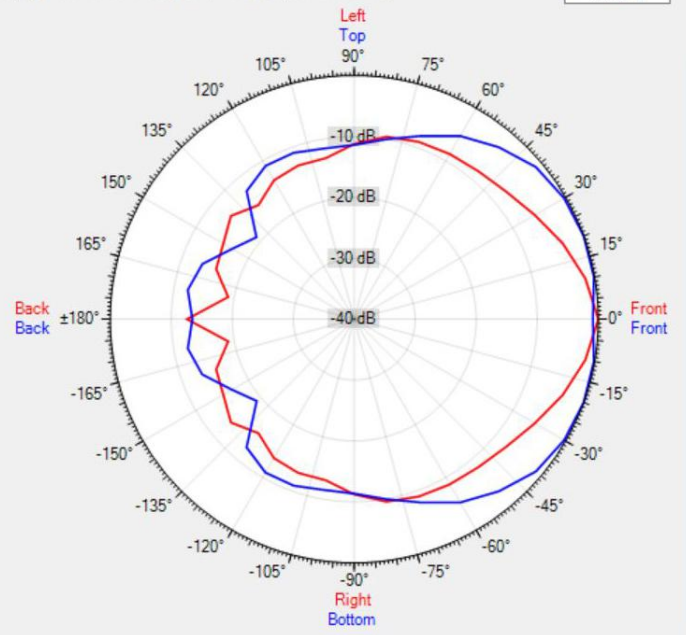
Data Shown: KUBO5T (Apart Audio)
Display Parameters: Frequency: 1000Hz (1/24th Octave)

Horizontal
Vertical



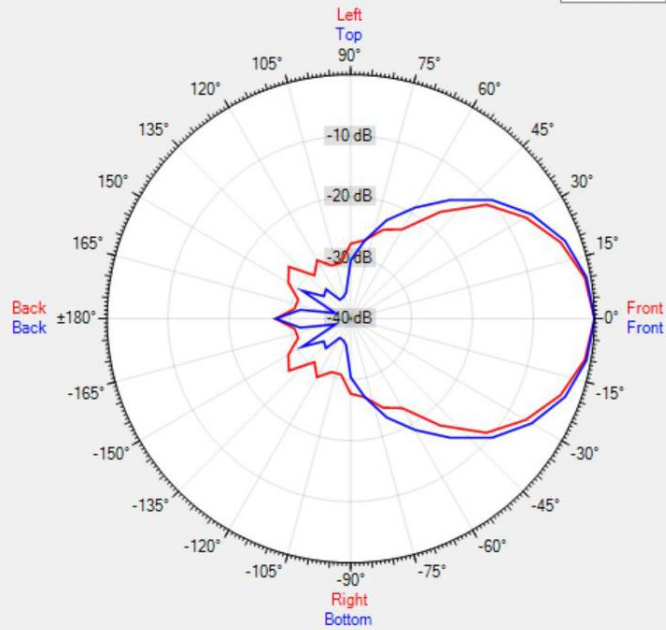
Data Shown: KUBO5T (Apart Audio)
Display Parameters: Frequency: 2000Hz (1/24th Octave)

Horizontal
Vertical



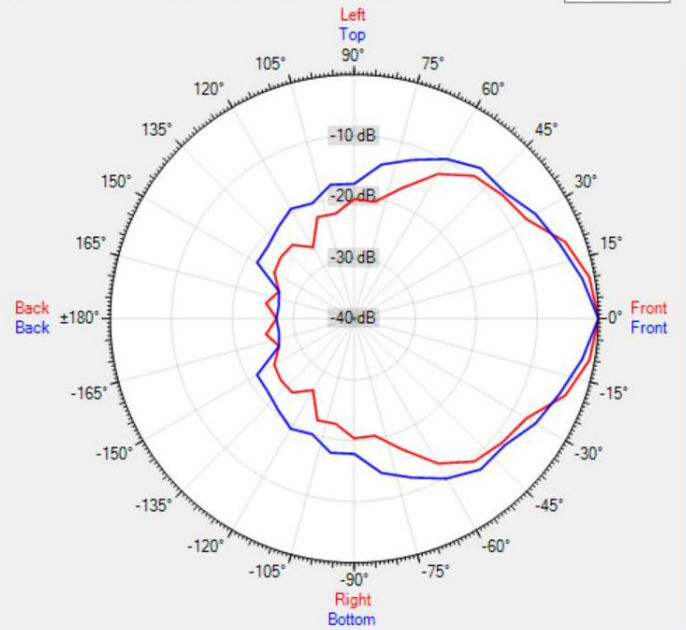
Data Shown: KUBO5T (Apart Audio)
Display Parameters: Frequency: 4000Hz (1/24th Octave)

Horizontal
Vertical

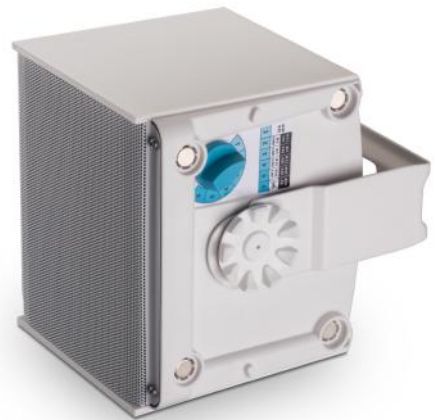


Data Shown: KUBO5T (Apart Audio)
Display Parameters: Frequency: 8000Hz (1/24th Octave)

Horizontal
Vertical



MORE PICTURES





ACCESSORIES



LRAPRE-W

Premium light rail adaptor KUBO3/5,SDQ5P,OVO5, pack of 2

LRBAS-W

Basic light rail adaptor KUBO3/5, SDQ5P, OVO5, pack of 10